

LAKE MAC ARTS PERFORMANCE



EXPRESSIONS
OF INTEREST

EXPRESSIONS OF INTEREST

Lake Mac Arts Performance.

Call for Expressions of Interest: Performances at Lake Macquarie Venues

Are you a performer, theatre group, or production team looking for an exciting opportunity to showcase your talent?

We are looking for performances of theatre, poetry, dance, music, comedy, and more.

Lake Macquarie Arts is thrilled to invite Expressions of Interest for performances at our venues: Multi-Arts Pavilion, mima (MAP mima), Warners Bay Theatre, baramayiba, and Rathmines Theatre, nawayiba.

Tiered Support Packages:

TIER ONE:

- In-kind venue hire
- Ticketing services
- Marketing support
- All proceeds from ticket sales go directly to your production team.

TIER TWO:

- In-kind venue hire
- Ticketing services
- Marketing support
- \$2500 grant to support artist fees and production costs
- A percentage of ticket sales goes to your production team.

TIER THREE:

- In-kind venue hire
- Ticketing services
- Marketing support
- \$5000 grant to support development, artist fees, and production costs
- A percentage of ticket sales goes to your production team.

HOW TO APPLY:

Submit your Expression of Interest by 5pm Tuesday 6th August 2024.

Your submission should include:

- A brief overview of your performance or production
- Your preferred tier of support
- Any specific requirements or requests

Selection Criteria:

Applications will be assessed based on the artistic quality, feasibility of the production, and alignment with the goals of Lake Macquarie Arts.

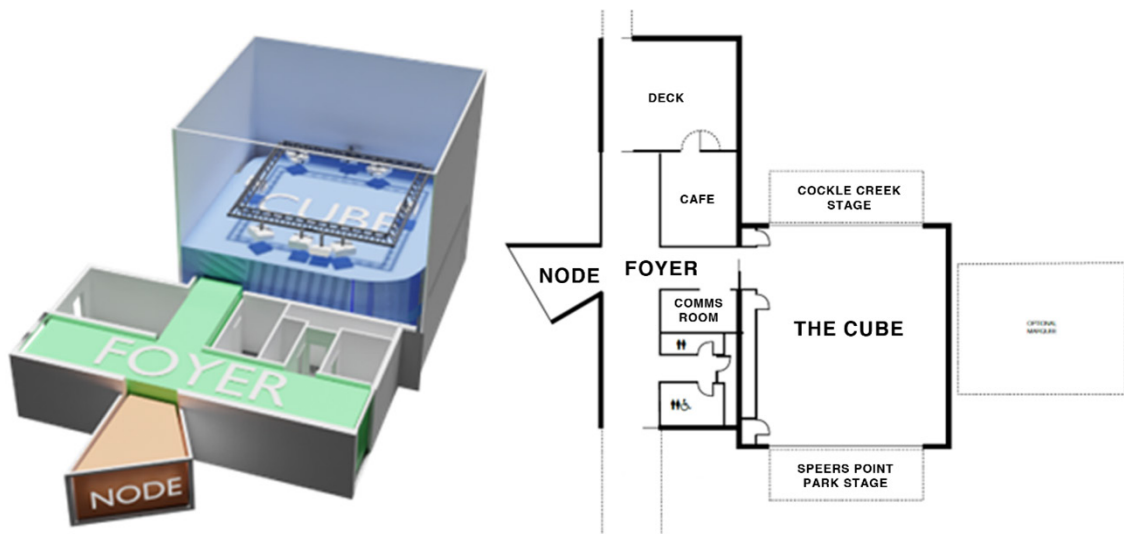
For more information and to submit your Expression of Interest, please send an email to **theatres@lakemac.nsw.gov.au** or visit <https://arts.lakemac.com.au/Get-involved/Creative-opportunities>

We look forward to seeing your creativity and talent shine on our stages!

MULTI-ARTS PAVILION
MAP mima



MULTI-ARTS PAVILION MAP mima



The versatility of MAP mima's two monarch doors allows audiences to be placed in three distinct locations: inside the cube, on the Cockle Creek side, and the Speers Point Park side. MAP mima can encourage and accommodate site-oriented theatre productions that push boundaries between performers, venue and audiences.

AUDIENCE CAPACITY:

Inside the Cube (Indoor) = 40 seats

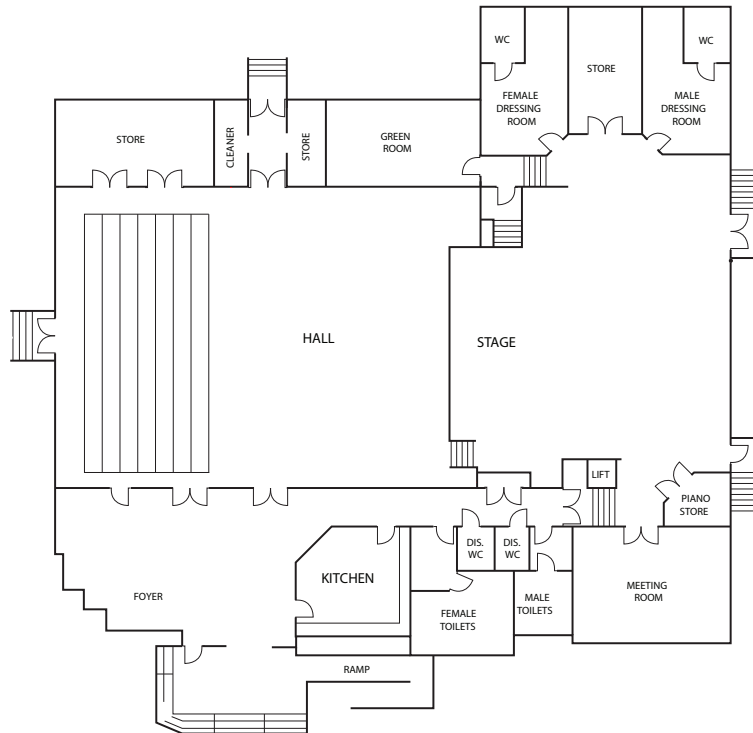
Cockle Creek Stage (Outdoor) = 150 seats

Speers Point Park Stage (Outdoor) = 250 seats

WARNERS BAY THEATRE,
baramayiba



WARNERS BAY THEATRE, baramayiba



Warners Bay Theatre offers a 10m x 10m stage with wings, crossover and stair access from the auditorium to stage. A standard lighting rig, house PA with wireless microphones and playback, projector and motorised screen is available for use.

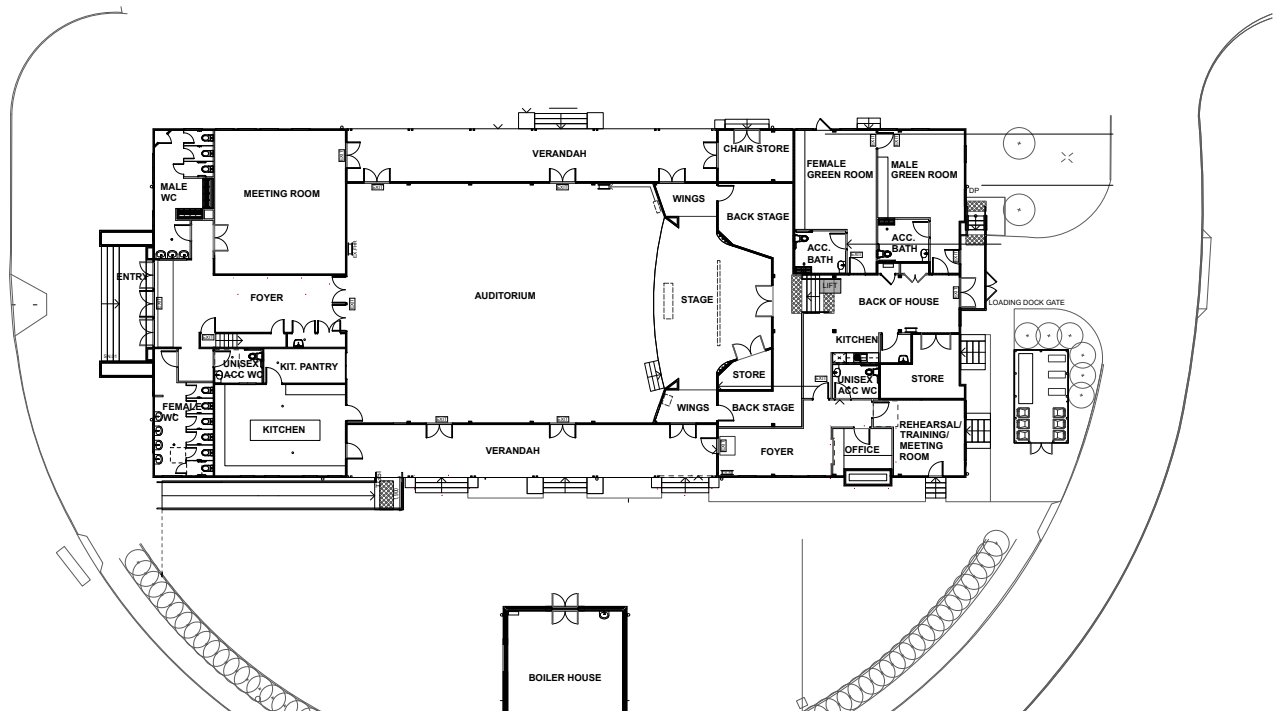
AUDIENCE CAPACITY:
up to 300 seats
(including 96 tiered seating)

RATHMINES THEATRE
nawayiba



RATHMINES THEATRE

nawayiba



The Rathmines Theatre is a 200-capacity theatre for professional and amateur musical, theatre, dance, and cultural groups. The stage is 6.5m deep x 9m wide (tapers back to 5m wide upstage)

AUDIENCE CAPACITY:

up to 200 seats